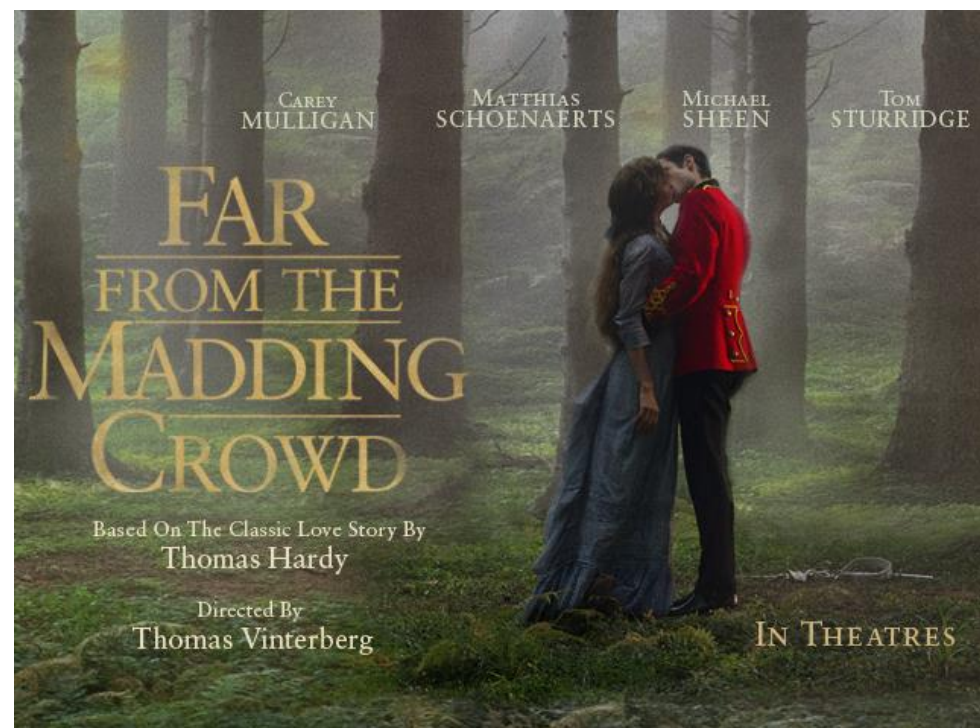


Films for screening November 2021 - January 2022



Wednesday 13 October 2021

Date	Title	Description
10 Nov	Summerland (12A certificate)	An intensely emotional drama of love's endurance in trying times. A little boy is evacuated from London to the south coast during world War II and is billeted on an initially reluctant spinster. They soon realise that they have much in common.
8 Dec	<i>Mystery film</i> (12A certificate)	Our mystery film this year is an Oscar-winning drama focusing on an unusual relationship between two real-life people, and featuring some seriously good jazzy music.
12 Jan 2022	The odd couple (PG certificate)	1960s American comedy. A neurotic obsessive-compulsive, feeling suicidal after being abandoned by his wife, moves in with a divorced friend who is a fun-loving slob. They get hilariously on each other's nerves.



Doors will open at 7 pm and screenings start at 7.30

Website: www.stjohnsplace.uk

Far from the madding crowd

Thomas Hardy's novel has been retold as a vibrant soap opera, complete with love triangles, pregnancy, suicide, love sick neighbours, crimes of passion, more marriage proposals than you can shake a chaff fork at, missed opportunities, bad decisions, broken hearts and petticoats. Old-fashioned romantic drama rather than Hardy-esque tragedy.

Carey Mulligan is Bathsheba Everdene, the headstrong and beautiful mistress of a sprawling farm inherited from her uncle. She's an independent and irresistible man magnet, fielding proposals from such suitors as a physically imposing sheep farmer, a prosperous middle-aged landowner, and an arrogantly unprincipled soldier who uses swordplay as foreplay. Through reversals of fortune and chance encounters Bathsheba perseveres, making her way through the world as the very embodiment of resilience and grace.

Director Thomas Vinterberg brings a luminous energy and modern feel to an old tale. Carey Mulligan's nuanced and soulful performance makes one identify completely with her shrewd, contradictory and strong-willed character, and the mostly Dorset locations are resplendently photographed.

UK/USA - 2015 - 113 minutes - 12A certificate

Wednesday 13th October 2021

St John's Place, Lower Road, Lower Bemerton

Doors open 19.00

Programme starts 19.30

Entrance £6



As there is still both uncertainty and concern about the effects of recent rises in covid-19 cases, the Film Society has decided that we should continue with some of the previous precautions with which you are now familiar.

The precautions we need to take to reduce the infection risk include:

- To ensure safe social distancing between seats, numbers attending will be restricted. Couples will be able to sit together.
- However, we no longer require people to book in advance.
- Although it is no longer compulsory to do so, everyone will still be asked to wear face masks into the screening. Please bring your own.
- **Entrance will be through the west door, at the side of the building.**
- **We will now be offering hot drinks as well as wine and cold drinks.**
- There will be a toilet available.
- The screening may be called off at short notice if regulations change, or if there is a local outbreak.

We hope you enjoy the film, despite these continuing constraints. We eventually expect to become less restrictive for screenings, but a lot still depends on what happens nationally during the near future.